



Southwark nature  
action volunteers |



	Southwark Nature Action Volunteers – 3 March 2020	
6.45	Registration sign in. Name labels & local park Refreshments	Catriona
7.00	Welcome	Chris Henry
7.05	Origin & purpose of idea- WLH Butterfly & Elms	Jenny Morgan
7.10	What are the Biodiversity Action Plans for Southwark and progress report on implementation?	Jon Best
7.20	Film - WLH Butterfly	Tom Rogers
7.35	How volunteer scheme may work & benefits to volunteers and Parks Team.	Jenny & Jon
7.45	Views and questions  News from other Friends groups	Chris
8.00	Butterflies in Burgess Park, Southwark parks and green spaces  Butterfly Surveys	Simon Saville
8.15	Film – Elm trees	Tom
8.30	Discussion <ul style="list-style-type: none"><li>· What would be important to make it work? Ideas for implementation</li><li>· Where would you like to see things happen? What you'd like for your park.</li><li>· What can you offer? Help and support</li></ul>	Chris
8.45	Next steps - Confirm that we have contact details.	Chris
9.00	Goodbye & Thanks	Chris

# Nature Action Volunteers

## 3<sup>rd</sup> March 2020



@lb\_southwark



facebook.com/southwarkcouncil

# Nature in cities







# Benefits of Biodiversity

- **Improved Health and Wellbeing**
- **Increased cultural and leisure opportunities**
- **Helps to regulate our environment**
- **Helps to provide a sense of place and community pride**
- **Provides an education and engagement resource**





# Notable Habitats and species

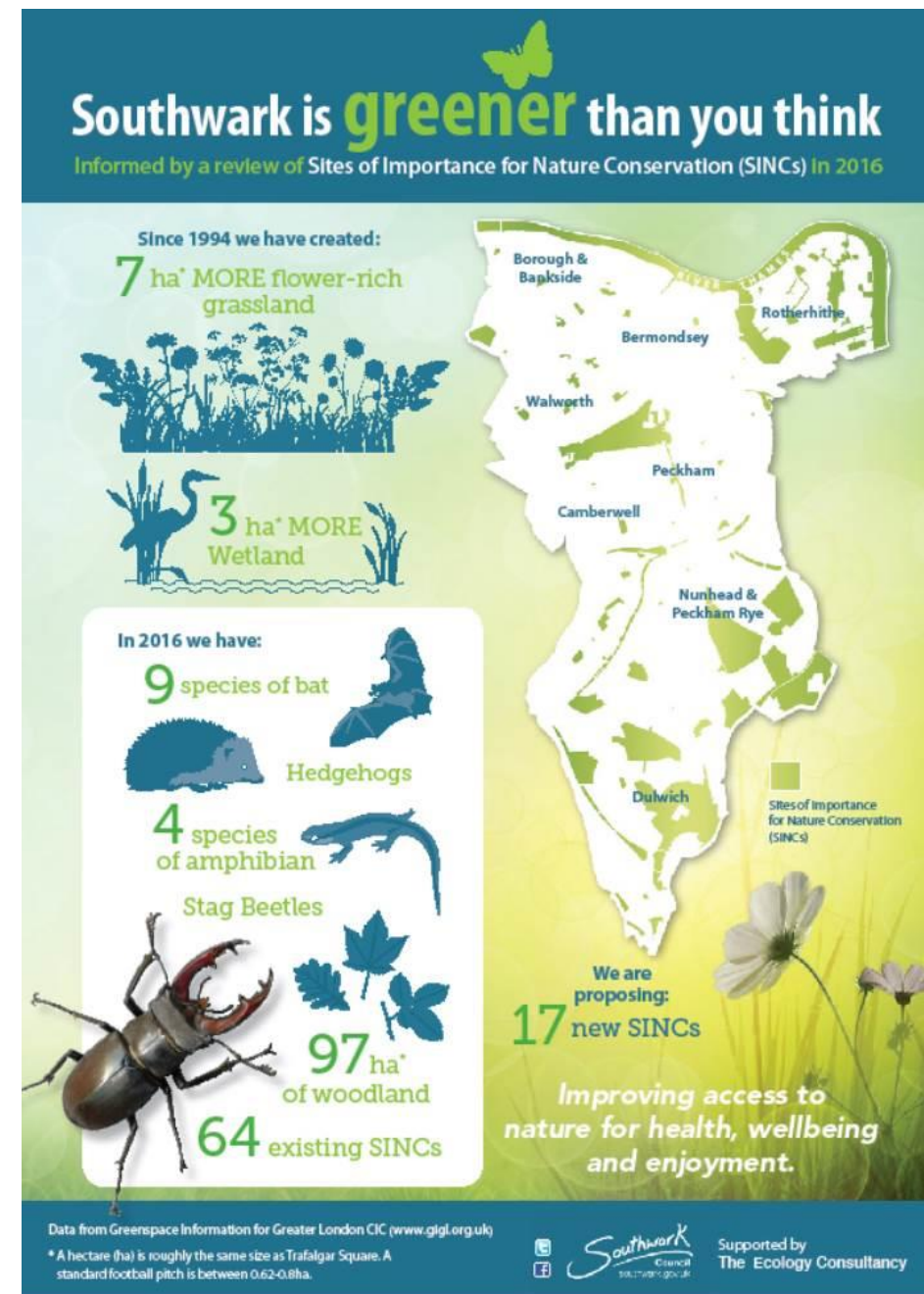
- Ancient Woodland
- Meadows
- Reedbed
- Lakes and ponds
- Parks and gardens
- 21 Red Data bird species and 31 amber species
- 9 species of bat
- 2 species of reptile
- Hedgehogs
- Rare invertebrates
- Rare plants and fungi



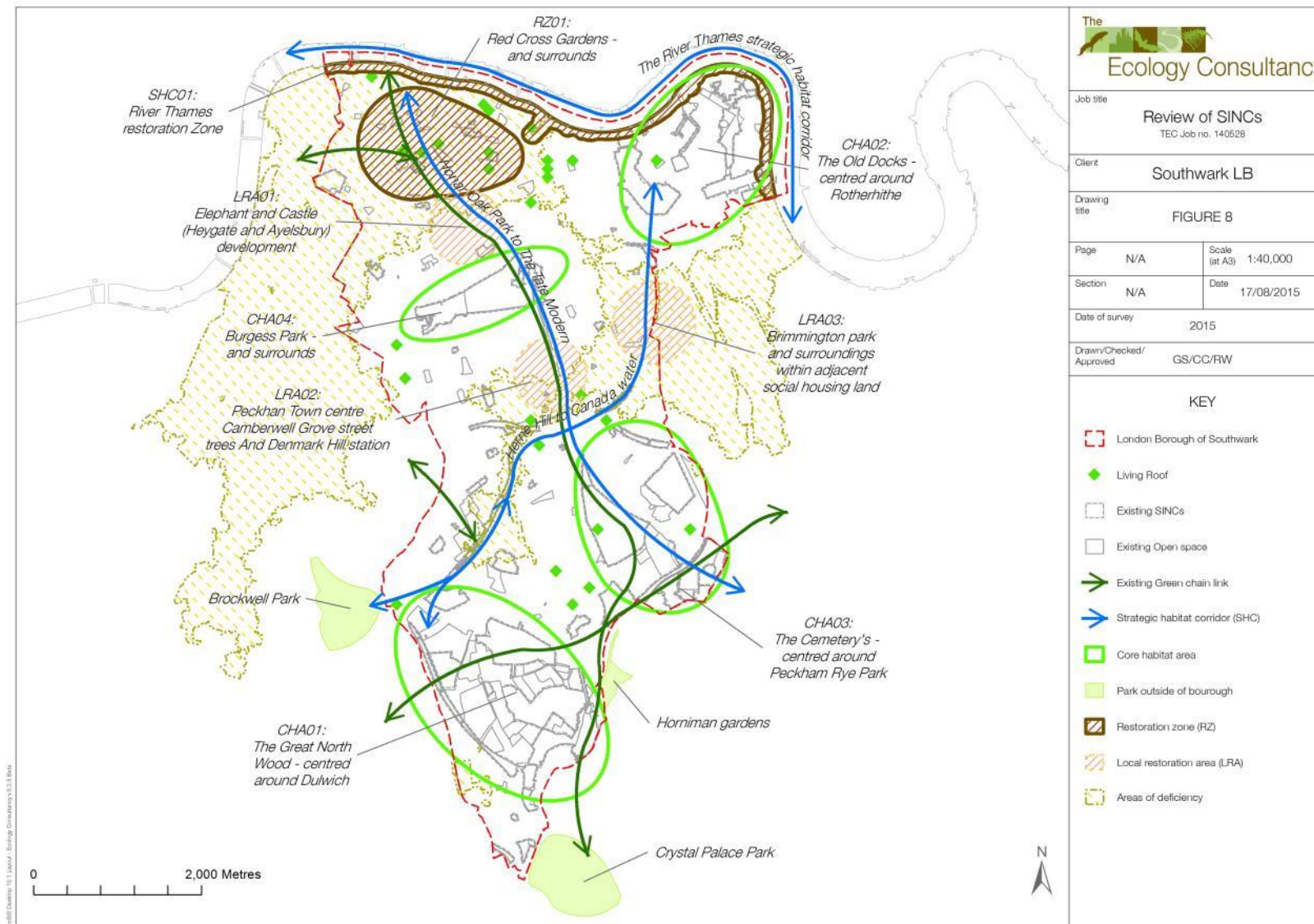
# 2013 -2019

## Biodiversity Action Plan

- 58 of 61 actions completed
- New Ponds, Meadows, Hedges and Reedbed
- SINC review completed
- 17 New SINC sites proposed







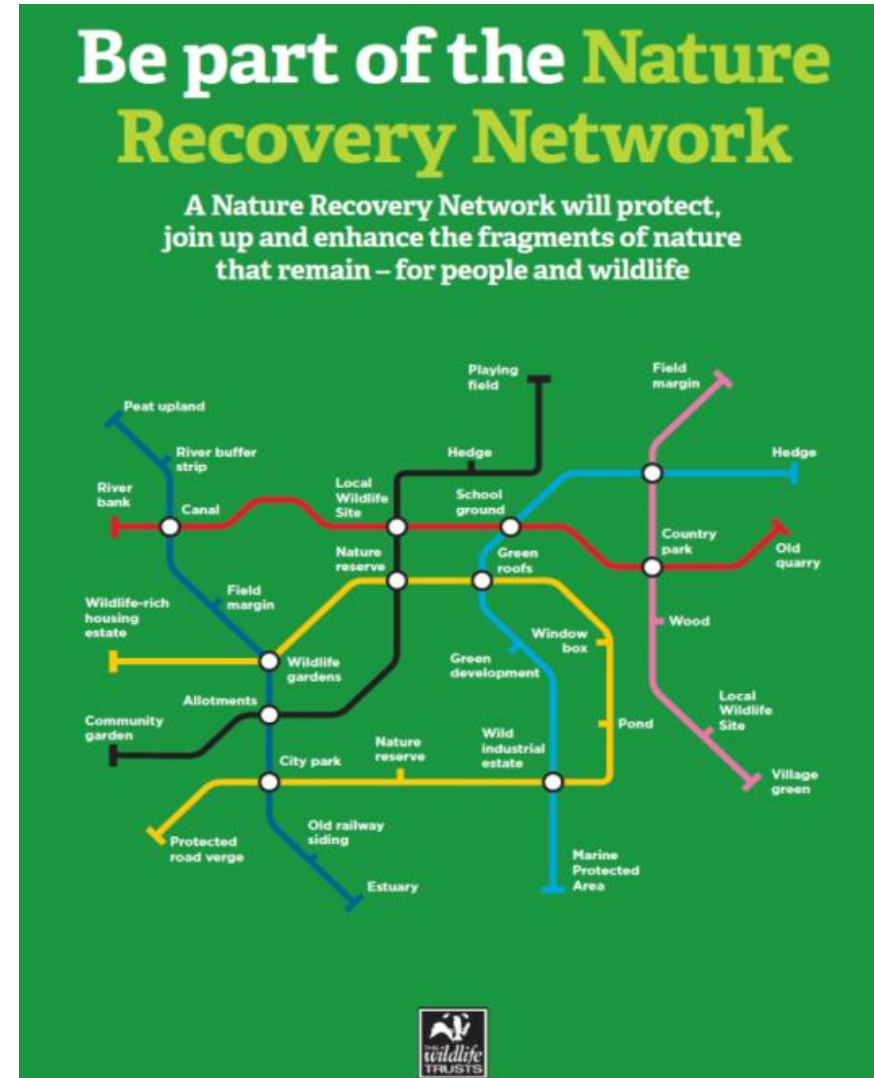
Arboretum 101 Layout - Ecology Consultancy v2.0.0 Beta

This plan is provided solely for the purpose of supporting the description of the ecological features of the site as contained in the accompanying report

# Southwark Nature Action Plan

## Key Themes:

- Making Nature Accessible for All
- Biodiversity Net Gain
- Nature Recovery Network



# Habitat Action Plans

- Built Environment
- Gardens and Grounds
- Parks and open spaces
- Woodland





# Species Action Plans

- Bats
- Hedgehog
- Stag Beetle
- Amphibians Inc.  
dragonflies & damselflies
- Birds, Swift, Sparrow & Raptors
- Native trees, Flora & Fungi
- Pollinators, bees & butterflies



# Priorities

- Biological Monitoring
- Raise awareness
- Pests and diseases
- Stag Beetle
- Pollinators



# Biological Monitoring

- London Records Centre
- SINC Review Baseline
- Reporting tool
- Specialist Surveys
- Training
- Citizen Science - OPAL
- Campaigns





# Raise Awareness

- Understand our resources
- Hold and promote events
- Provide Interpretation
- Promote Volunteering
- Support big projects
- Link to other programmes
- Engage with residents through Great estates programme
- Seek Biodiversity Gain on developments



# Pests & Diseases

- Biosecurity
- Risk
- Health Issues
- Cost
- Damage





# Stag Beetle

- Build and replace loggeries
- Report adult sightings
- Retain Deadwood





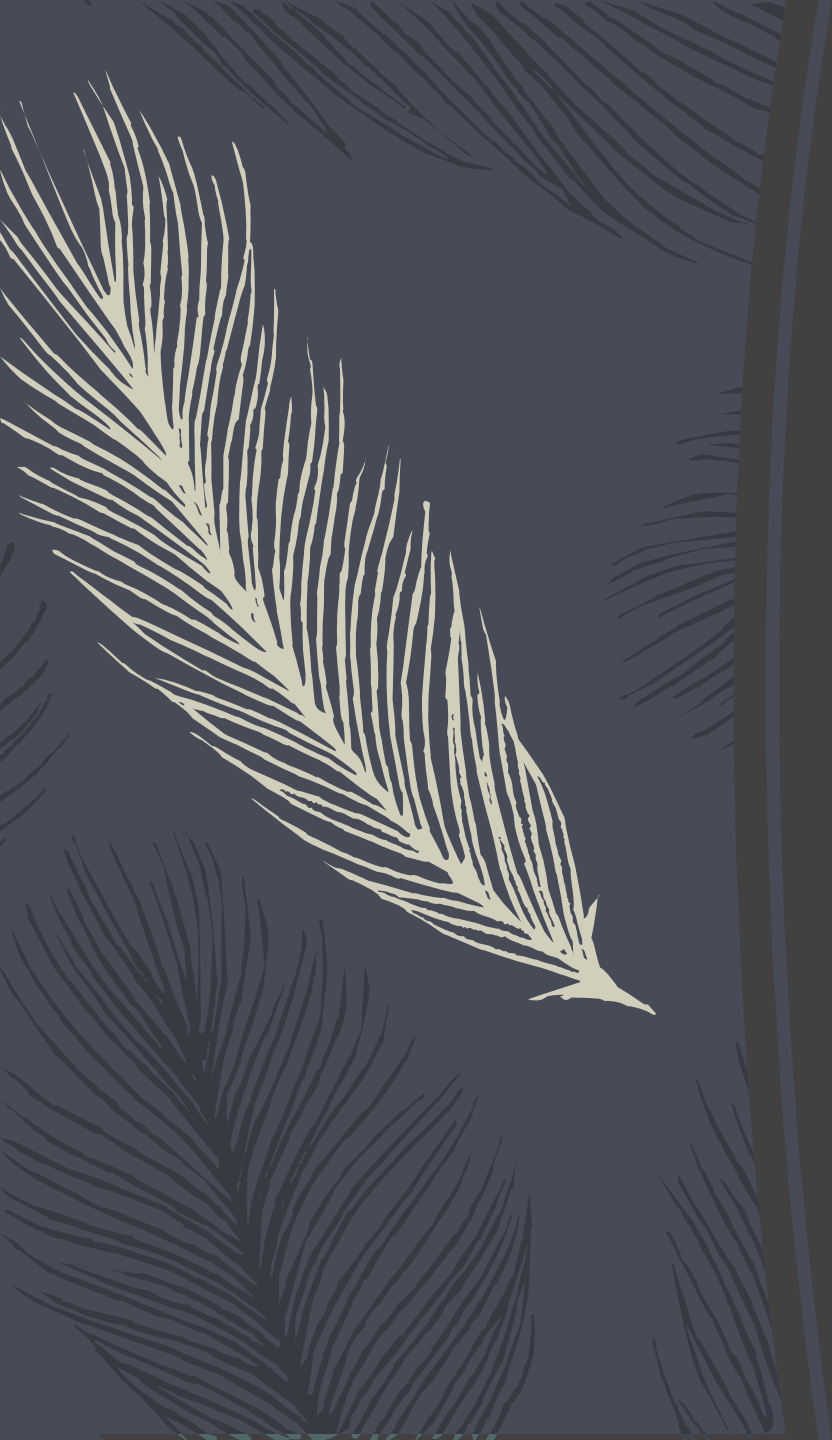
# Pollinators

- Plant flora for pollinators
- Plant trees & hedges for pollinators
- Review mowing
- Install Bug hotels
- Link pollinator habitats
- Retain long grass throughout the year
- Ensure new developments plant for pollinators



# Contact Details

Jon Best  
Ecology Officer  
Southwark Council  
[Jon.best@southwark.gov.uk](mailto:Jon.best@southwark.gov.uk)  
0207 525 0876  
07985 369 245



YouTube Film:  
The White-letter Hairstreak



A word cloud graphic centered on a bright green rectangular background with rounded corners. The background is set against a dark grey background featuring a pattern of stylized, overlapping leaf or feather shapes. The word 'Volunteers' is the largest and most prominent, written in a dark blue, sans-serif font and rotated diagonally from the bottom-left towards the top-right. Other words are scattered around it in various sizes and orientations, including 'team-work' (rotated 90 degrees counter-clockwise), 'Collaborative', 'new skills', 'planning', 'Knowledge', 'share-skills' (rotated 90 degrees clockwise), 'Learning', 'engaging experts', 'Practical', and 'take-action' (rotated 45 degrees clockwise).

team-work Collaborative  
new skills  
planning  
Knowledge  
share-skills  
Volunteers  
Learning  
engaging experts  
Practical  
take-action



Friends of Parks groups projects call on Southwark Nature Action to help deliver.



Organisations such as Butterfly Conservation call for volunteers to carry out surveys.



Parks get help with tasks like planting plug plants in wildlife area or digging ponds.



Map wildlife sightings across the borough to target habitat action



Photographic record of wildlife and special habitats in Southwark.

---

## Examples of volunteer activity

# Nature Action Volunteers – benefits

---



FRIENDS GROUPS WORK  
TOGETHER



MORE PEOPLE LEARN  
ABOUT NATURE  
CONSERVATION



MORE PRACTICAL  
NATURE  
CONSERVATION ACTION



GREAT WILDLIFE FOR  
PARK USERS AND MORE  
INFORMATION



# Butterflies in Burgess Park and Southwark

Simon Saville, 3rd March 2020

Chair, Surrey & SW London Branch of Butterfly Conservation



Marbled White, Burgess Park



**Butterfly  
Conservation**

Saving butterflies, moths and our environment



# Butterfly monitoring in Southwark

Transect	Started
Belair Park	2019
Burgess Park North	2019
Burgess Park South	2019
One Tree Hill & Brenchley Gdns	2018
Stave Hill Ecology Park	2018
Sydenham Hills Woods & Cox's Walk	2010
<i>Dulwich Park</i>	<i>tbc</i>



Common Blue (female)



**Butterfly  
Conservation**

Saving butterflies, moths and our environment

# Burgess Park is good for butterflies - at least 23 species

- Small Skipper
- Essex Skipper
- Large Skipper
- Brimstone
- Large White
- Small White
- Green-veined White
- Orange Tip
- White-letter Hairstreak
- Small Copper
- Brown Argus
- Common Blue
- Holly Blue
- Red Admiral
- Painted Lady
- Small Tortoiseshell
- Peacock
- Comma
- Speckled Wood
- Marbled White
- Gatekeeper
- Meadow Brown
- Small Heath
- *Ringlet ??*
- *Purple Hairstreak ??*

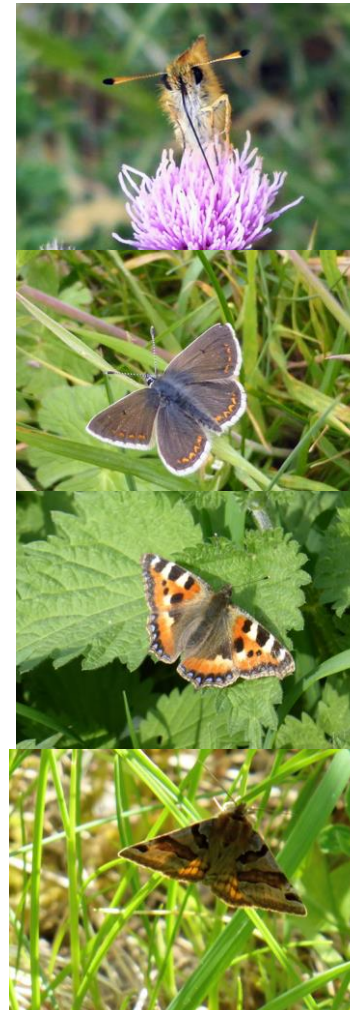


Butterfly  
Conservation

Saving butterflies, moths and our environment



# Burgess Park butterflies - and moths



Butterfly  
Conservation

Saving butterflies, moths and our environment



# Burgess Park - wilder areas

1. Elm trees
2. Burgess Park West Nature area (new)
3. Big mounds
4. Grassy area by St. George's Way
5. South-facing slope
6. Grassy area
7. Wooded area N of the lake
8. Grassy area S of the lake
9. Grassy area and hedges near Waite St
10. Glengall Wharf, by Surrey Canal Walk



**Butterfly  
Conservation**

Saving butterflies, moths and our environment



**Map of Burgess Park and surrounding areas in London, showing butterfly transect walking routes and search areas.**

**Legend:**

- Section start and end points (Orange dots)
- Butterfly transect walking route (with directions of travel) (Blue and pink lines with arrows)
- Butterfly transect search areas with section number (Yellow boxes with numbers 1-18)

**Scale in meters:** 0 to 150

**Production information:** Produced by the London Wildlife Trust. Based upon the Ordnance Survey 1:10,000 map with the permission of The Controller of Her Majesty's Stationary Office. © Crown Copyright. All rights reserved. Licence No. AL100023493 April 2016.

**London Wildlife Trust logo:** A stylized bird logo with the text "London Wildlife Trust".



# Training for transect walks

## **Classroom session, 1 - 1½ hours**

- Introduction into monitoring butterflies
- Abundance vs. distribution
- Phenology
- Wider countryside vs. habitat specialist butterflies
- Ways of recording, e.g. iRecord app
- Methodology of transect recording
- Butterfly identification in London

## **Walk around one of the Burgess Park transects, 1½ miles**

Best done in late March, e.g. Sat 28th / Sun 29th



**Butterfly  
Conservation**

Saving butterflies, moths and our environment

# Burgess Park transects

## Burgess Park North

1. Big mounds x3
2. Mound + young elms
3. Chumleigh Gardens
4. Mound by car park
5. Wooded area by Albany Road
6. Around the lake
7. Coburg nature area
8. Waite Street nature area, plus oaks

## Burgess Park South

1. Glengall Wharf area
2. Grassy area
3. Path and south-facing slope
4. Grass and brambles
5. Semi-formal gardens
6. Grass and brambles
7. Burgess Park west nature area (new),  
plus elms at New Church Road



**Butterfly  
Conservation**

Saving butterflies, moths and our environment



# Burgess Park



Grassy area near the Bridge to Nowhere - alive with bees, beetles, butterflies and spiders



**Butterfly  
Conservation**

Saving butterflies, moths and our environment



# Grassland butterflies



Gatekeeper

- likes nectaring on Bramble and thistles



Large Skipper



**Butterfly  
Conservation**

Saving butterflies, moths and our environment

## Grassland butterflies - skippers



Small Skipper



Essex Skipper

Very similar, but note difference in the antennae



**Butterfly  
Conservation**

Saving butterflies, moths and our environment



“Come in to my parlour said the spider to the fly”





## More grassland butterflies - thistles good for nectar



Marbled White (m)



Marbled White (f)

First sightings(?) for Burgess Park, July 2019  
Seen on Wandsworth Common, too. Is it extending its range?



Butterfly  
Conservation

Saving butterflies, moths and our environment

# Meadow Brown and Ringlet



Meadow Brown



Ringlet

Not yet seen in Burgess Park (?)





## Common Blue - needs Bird's-foot Trefoil



Burgess Park

Common Blue (m)



Burgess Park

Common Blue (f)



**Butterfly  
Conservation**

Saving butterflies, moths and our environment



## Brown Argus - needs Common Rockrose



Brown Argus (m)



Brown Argus (m)

First sightings(?) for Burgess Park, May 2019  
Is it extending its range?



Butterfly  
Conservation

Saving butterflies, moths and our environment

## Orange Tip - needs Garlic Mustard



Orange Tip (m), and egg on Garlic Mustard  
May 2019



**Butterfly  
Conservation**

Saving butterflies, moths and our environment



# Woodland butterflies



White-letter Hairstreak - Elm

Purple Hairstreak - Oak: look 6.30 - 8pm



**Butterfly  
Conservation**

Saving butterflies, moths and our environment



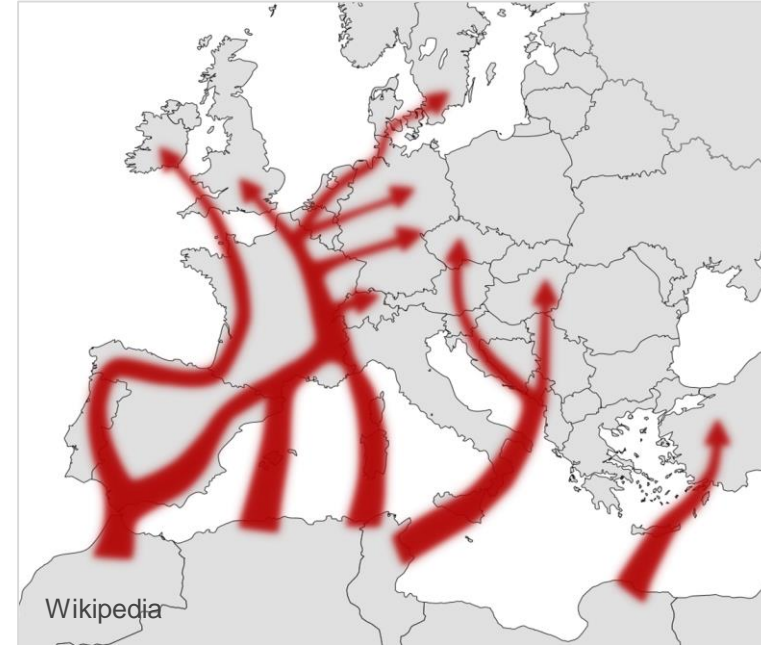
## Look out for ...



Painted Lady

BBC iPlayer: "The Great Butterfly Adventure"

<https://www.bbc.co.uk/iplayer/episode/b07yqfkq/the-great-butterfly-adventure-africa-to-britain-with-the-painted-lady>



Spring migration northwards

- over several generations.

Return south in the autumn at high altitudes (500m+).



**Butterfly  
Conservation**

Saving butterflies, moths and our environment

# Cinnabar Moth



Caterpillar on Ragwort (July)



Adult moth (May-July)



**Butterfly  
Conservation**

Saving butterflies, moths and our environment



# Burnet and Burnet Companion moths



Six-spot Burnet moths and cocoon  
(July)



Burnet Companion (May-July)



**Butterfly  
Conservation**

Saving butterflies, moths and our environment



# Where have all the Small Tortoiseshells gone?

- Used to be very common and widespread - a regular garden visitor to Buddleia
- Now seen much less often
- Possible causes?
  - *Sturmia bella*, a non-native parasitic fly
  - Early hibernation (July)

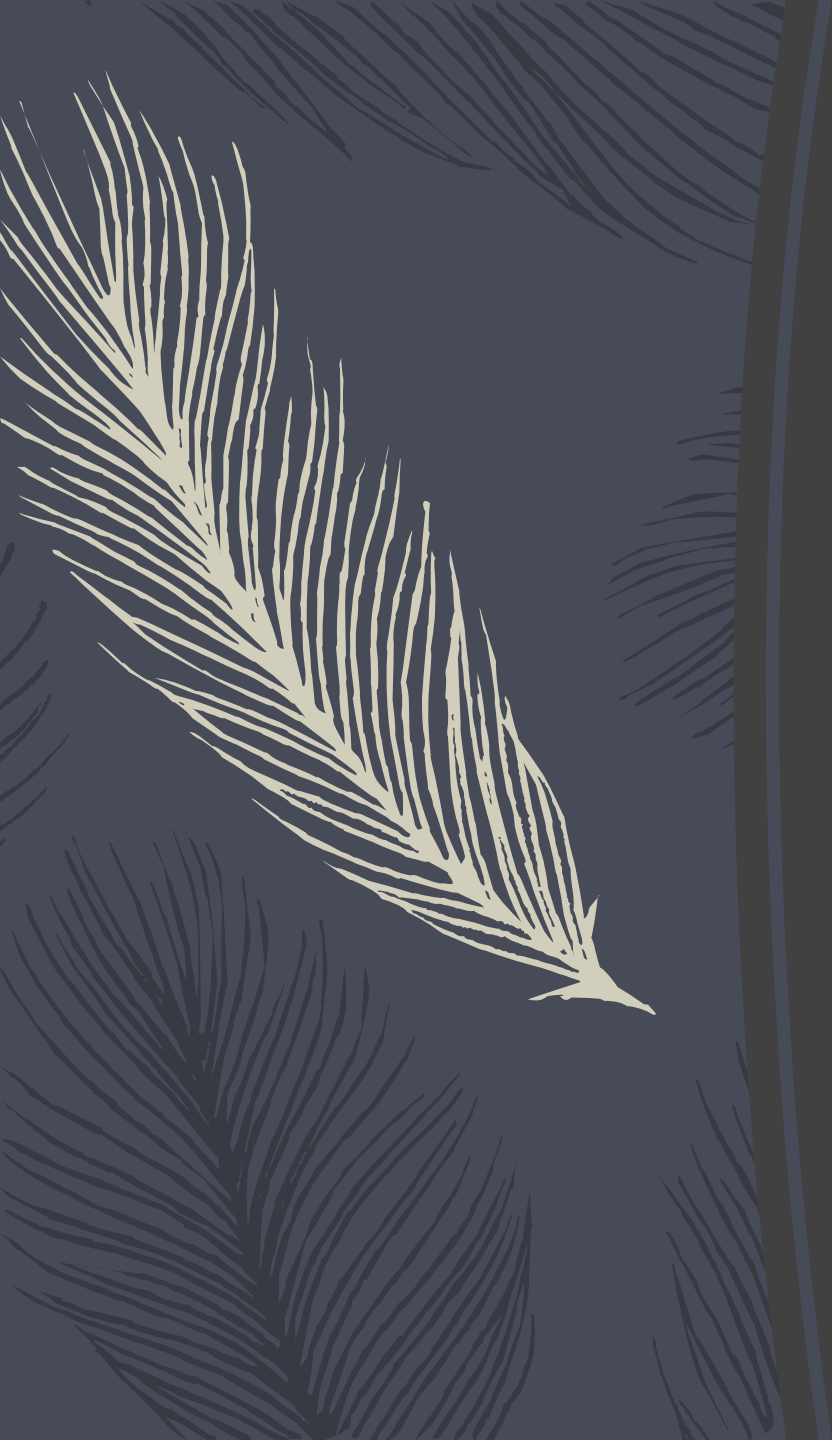


Adult (April)



Butterfly  
Conservation

Saving butterflies, moths and our environment



# YouTube Film: The A-Z of London Elms



# Discussion

---

- What would be important to make it work? - Ideas for implementation
- Where would you like to see things happen? What you'd like for your park.
- What can you offer? Help and support



# Planned events - New projects to help plan

---

- ☐ **Sunday 22 March – Burgess Park west nature area clean-up**
- ☐ **Sunday 3 May Burgess Park Dawn Chorus Walk – with RSPB**
- ☐ April - Butterfly Conservation training, organise monthly surveys
- ☐ Urban tree festival 16-24 May – Elm tree ID walk to be arranged
- ☐ Burgess Park lake – June water plants – to grow and plant
- ☐ Identify species and locations for 50 new trees (Sports Centre)
- ☐ November – hedge planting Surrey Canal Walk -
- ☐ Butterfly plug plants – poly tunnels seedlings with idVerde
- ☐ New projects ...





Thank you

---